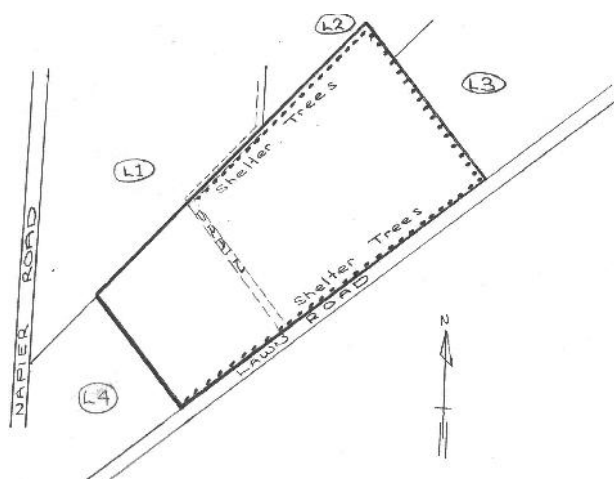


Property Spray Plan (Lawn Road).



Neighbours' Contact Phone Numbers

Key	Name	Contact
L1	T&G Global	(06) 871 5600
L2	T&G Global	(06) 871 5600
L3	Liley, DJ & LM	(06) 876 3090
L4	Mr Apple NZ	(06) 873 1030

Spray Operator Details

Agrichemical is applied under the direct supervision of the following operators.

Name	Growsafe	Expires	Contact
Dames, Jos	S-077100-03	July 2024	0274 490099
Dames, Mark	S-077100-03	July 2024	021 871606
HARVEY, Chris	S-070468-02	August 2024	06 879 7759

Crops Sprayed

Apples and pome fruit crops are sprayed using Integrated Fruit Production (IFP) programmes and grown primarily for export markets. Spray application is ground applied using tractor driven airblast equipment. No aerial spraying is used.

Hazard Management

Accident Procedure	Determine cause of event. Turn off or disengage equipment to make area safe. Assess nature of event. Evacuate if required. Advise emergency contact.
Emergency Contacts	Ambulance/Fire emergency DIAL 111 . Police 06 8783007: Ambulance 06 8357700. Hospital 06 8788109. National Poisons 03 4747000. HB Regional Council 0800 108838. Jos 0274 490099. Mark 021 871606.
Contamination Strategies	Live shelter belts on roadside and affected boundaries are grown to a minimum of 3 meters high and evergreen. Roads are potentially used by children. Spray operators use best endeavours to spray boundary areas before 0800 and after 1600 hours where no shelter trees are present.
Drift Hazard / Sensitive Areas	Spraying not recommended during winds in excess of 10 km per hour. IFP programme avoids unnecessary spraying and low volatility chemicals are used by choice.
Hazardous Agrichemicals	Use of insecticides in accordance with label instructions. Agrichemicals are stored in secure areas on orchard property.